



ISRC3411U1 - Rev A

AquaVac® 500 Series

Owner's Manual




Contents


Warnings	2
Information	4
Operating Instructions.....	7
Maintenance	13
Troubleshooting.....	17
Warranty Registration	23


SAVE THIS OWNER'S MANUAL

IMPORTANT SAFETY INSTRUCTIONS

Basic safety precautions should always be followed, including the following: Failure to follow instructions can cause severe injury and/or death.

 This is the safety-alert symbol. When you see this symbol on your equipment or in this manual, look for one of the following signal words and be alert to the potential for personal injury.

 **WARNING** warns about hazards that **could** cause serious personal injury, death or major property damage and if ignored presents a potential hazard.

 **CAUTION** warns about hazards that **will** or **can** cause minor or moderate personal injury and/or property damage and if ignored presents a potential hazard. It can also make consumers aware of actions that are unpredictable and unsafe.

Hayward Pool Products

620 Division Street, Elizabeth, NJ

07207 Phone: (908) 351.5400

www.hayward.com

HAYWARD only warrants the quality, performance and safety of its products when assembled with genuine Hayward manufactured parts. Use of non-genuine Hayward manufactured parts will void all warranty.



HAYWARD®



⚠ WARNING – READ AND FOLLOW ALL INSTRUCTIONS in this owner's manual and on the equipment. Failure to follow instructions can cause severe injury and/or death.

⚠ WARNING - Ensure that children do not attempt to access cleaner while it is operating.
Closely supervise children at all times.

⚠ WARNING – Suction Entrapment Hazard.

Suction in suction outlets and/or suction outlet covers which are, damaged, broken, cracked, missing, or unsecured can cause severe injury and/or death due to the following entrapment hazards:



Hair Entrapment- Hair can become entangled in suction outlet cover.



Limb Entrapment- A limb inserted into an opening of a suction outlet sump or suction outlet cover that is damaged, broken, cracked, missing, or not securely attached can result in a mechanical bind or swelling of the limb.



Body Suction Entrapment- A negative pressure applied to a large portion of the body or limbs can result in an entrapment.



Evisceration/ Disembowelment - A negative pressure applied directly to the intestines through an unprotected suction outlet sump or suction outlet cover which is, damaged, broken, cracked, missing, or unsecured can result in evisceration/ disembowelment.

Mechanical Entrapment- There is potential for jewelry, swimsuit, hair decorations, finger, toe or knuckle to be caught in an opening of a suction outlet cover resulting in mechanical entrapment.



⚠ WARNING - Risk of Electric Shock. All electrical wiring **MUST** be in conformance with applicable local codes, regulations, and the National Electric Code (NEC). Hazardous voltage can shock, burn, and cause death or serious property damage. To reduce the risk of electric shock, do **NOT** use an extension cord to connect unit to electric supply. Provide a properly located electrical receptacle. Before working on any electrical equipment, turn off power supply to the equipment.

⚠ WARNING - To reduce the risk of electric shock replace damaged wiring immediately. Do not bury cord. Locate cord to prevent abuse from lawn mowers, hedge trimmers and other equipment.

⚠ WARNING - Do **NOT** ground to a gas supply line.

⚠ WARNING - To avoid dangerous or fatal electrical shock, turn **OFF** power to all electrical equipment before making electrical connections.

⚠ WARNING - Risk of Electric Shock. Connect only to a branch circuit protected by a ground-fault circuit-interrupter (GFCI). Contact a qualified electrician if you cannot verify that the circuit is protected by a GFCI.

⚠ WARNING - Risk of Electric Shock. The power supply must be connected only to a supply circuit that is protected by a ground-fault circuit-interrupter (GFCI). This GFCI should be tested on a routine basis. To test the GFCI, push the test button. The GFCI should interrupt power. Push reset button. Power should be restored. If the GFCI fails to operate in this manner, the GFCI is defective. If the GFCI interrupts power to the power supply without the test button being pushed, a ground current may be flowing, indicating the possibility of an electrical shock. Do not use this Power supply. Disconnect the power supply and have the problem corrected by a qualified service representative before using.

CONTINUED



⚠ WARNING - TO REDUCE THE RISK OF INJURY; DO NOT PERMIT CHILDREN TO USE THIS PRODUCT.

ALWAYS REMOVE THE CLEANER COMPLETELY FROM THE POOL PRIOR TO ENTERING THE POOL.

ALWAYS PUT THE CLEANER INTO THE WATER BEFORE connecting it to the GFCI protected electrical outlet.

BE CERTAIN THE POWER SUPPLY IS ONLY PLUGGED into a grounded electrical outlet equipped with an approved and properly operating ground fault circuit interrupter (GFCI).

DO NOT USE AN EXTENSION CORD. THIS COULD CREATE A SAFETY HAZARD AND/OR DAMAGE YOUR CLEANER.

DO NOT HANDLE CLEANER WHILE IT IS PLUGGED INTO THE ELECTRICAL OUTLET.

NEVER ALLOW PLUG TO ENTER THE POOL.

DO NOT OPERATE THE CLEANER OUT OF WATER. THIS WILL DAMAGE THE MOTOR SEAL AND VOID THE WARRANTY.

DO NOT DRAG THE CLEANER OUT OF THE POOL AGAINST THE SIDE WALL. THIS COULD DAMAGE UNIT AND/OR YOUR POOL WALL.

DO NOT BURY CORD. DO NOT OPERATE CLEANER WITH DAMAGED CORD. REPLACE DAMAGED CORDS IMMEDIATELY.

If the supply cord is damaged it must be replaced by the manufacturer, service agent, or similarly qualified persons in order to avoid a hazard.

To maximize the life of the cleaner, remove it from the pool when not in use and store in a shaded area.

SAVE THESE INSTRUCTIONS

While the cleaner has been made to operate as safely as possible, we suggest you exercise reasonable care in the handling of the cleaner and inspect the electrical cord frequently for damage or wear, as with any other electrical appliance. After use, remove the unit and rinse with fresh water and remove any twists that may be present in the cord. Store the cleaner and power supply in a shaded area.




HAYWARD®

CONSUMER INFORMATION AND SAFETY

⚠ DANGER	Risk of electrical shock or electrocution The electrical supply to this product must be installed in accordance with all applicable local codes and ordinances (see page 23). Improper installation will create an electrical hazard which could result in death or serious injury to pool users or others due to electrical shock, and may also cause damage to property.
⚠ WARNING	Do not play with cleaner or cable or apply to body. Can trap or tear hair or body parts. Cable can trip or entangle swimmers, which could result in drowning.
⚠ CAUTION	Before installing the cleaner, understand cleaner coverage. The cleaner was not designed to automatically clean steps or to work under a solar cover. It was also not designed to do initial cleanup for a new pool installation.
⚠ WARNING	Always stay out of the pool while cleaner is in operation or in the pool.

OPERATING THE CLEANER

⚠ WARNING	A Ground Fault Circuit Interrupter (GFCI –USA) must be installed to protect your electrical outlet and to prevent any possible electric shock. Failure to do so could create an electrical hazard which could result in death or serious injury to pool users or others due to electrical shock and may also cause damage to property.
⚠ CAUTION	DO NOT switch the pool cleaner to “ON” if it is not immersed in the water. Operating the cleaner out of the water may cause severe damage and will result in loss of warranty. Always remember to unplug the cleaner from the power supply before removing the cleaner from the pool.
⚠ WARNING	It is mandatory to allow a safety distance between the power supply and the pool as required by the current installation standard (11.5 feet minimum or 3.5 meters).
WARNING	Do not use an extension cord to connect to the power supply.
⚠ CAUTION	Power supply heat sink surface may be hot. 

Keep the power supply control in shaded area. The power supply control is equipped with an automatic shut off to prevent over heating if operated in direct sunlight.




HAYWARD®



⚠ WARNING - READ THESE IMPORTANT OPERATING TIPS BEFORE USING YOUR UNIT!

Dear Hayward Robotic Cleaner Owner:

Thank you for choosing Hayward. In order to achieve optimal performance, please read and follow these steps:

1. Always keep the power supply out of direct sunlight and in a shaded area. 
2. Cleaner filter cartridges should be thoroughly cleaned after each use or as often as needed to ensure cleaner's optimal performance. (see the Maintenance section for filter cleaning instructions)
3. Before using your cleaner and especially when opening the pool for the first time remove larger items such as toys, large leaves, or other debris from the pool that may diminish the cleaner's performance. Clean filter frequently when pool is excessively dirty.
4. For the first use, run cleaner for the full cycle (3 hours) to ensure a clean pool and give you a full understanding of the cleaner's capabilities. Subsequent cleaning may only require the quick clean cycle - 90 minutes (if so equipped).
5. In the Quick Clean Cycle the cleaner may periodically go to the wall but not necessarily climb to the vertical position. This is a normal part of the programmed cycle.
6. Cleaner may stop in the middle of the pool and reverse during cleaning cycle. This is a normal part of the programmed cycle.
7. **DO NOT** start cleaner out of the water. The unit will automatically shut off, but it is best to unplug the power cord when unit completes cleaning.



8. Only plug into a GFCI (Ground Fault Circuit Interrupter) protected 120 (+/-10%) volts AC outlet.
9. Place the cleaner power supply so that it is at a minimum distance of 11.5 feet (3.5 meters) from the pool edge. The length of the standard cleaner cable is 60 feet (18.29 meters).
10. Depending on the size and shape of your pool the entire length of the floating cable may not be necessary. The floating cable should reach from the cleaner power supply to the furthest point in the pool, plus the depth at the deep end of the pool. To reduce cable tangling any excess cable should be coiled and placed next to the power supply.



What is in the Carton

Robotic Pool Cleaner with Filter Elements



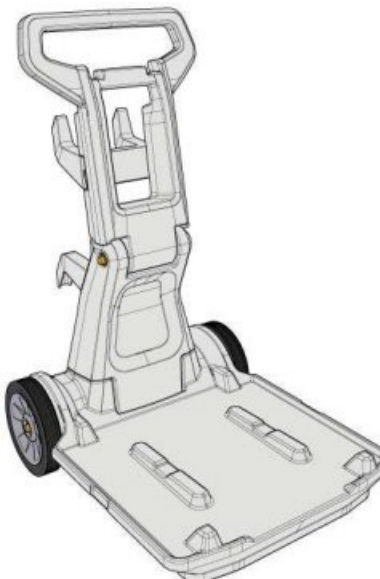
Cord with swivel



Power Supply Control (Keep in shaded area out of direct sunlight)



Caddy Cart (May be sold separately)

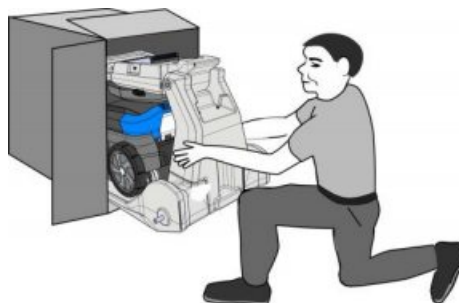




GENERAL OPERATING INSTRUCTIONS

Take a moment to get familiar with the cleaner.

Remove the cleaner by placing the carton down and removing it from the box as shown. Models with a caddy cart the cleaner and the Power Supply Control should be mounted on the cart.



Caddy Cart Assembly

1.



2. Insert Lower Hook using 2 self-tapping screws



3. Insert Upper Hook using 2 self-tapping screws



4. Remove plastic caps from axel. Lay cart on side, slide one wheel onto axel. Using a small hammer, gently tap axel cap onto axel.

Turn cart over and install remaining wheel and cap.

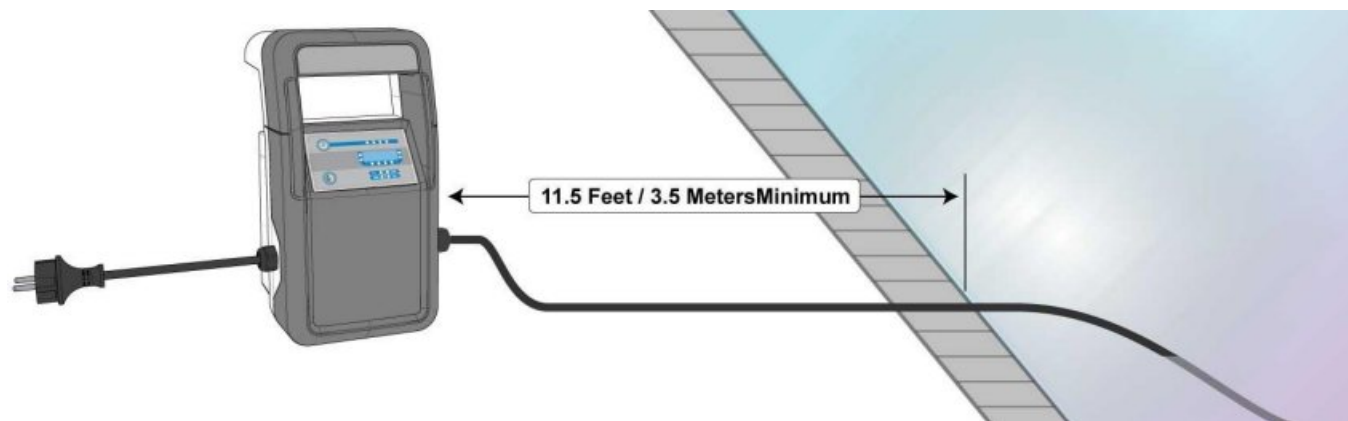


5. Mount cleaner & power supply



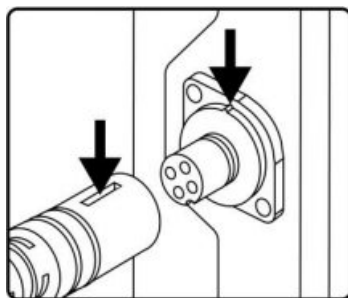


1. Select the nearest GFCI (Ground Fault Circuit Interrupter) protected 120 (+/-10%) volt AC outlet. DO NOT PLUG THE POWER SUPPLY INTO THE POWER OUTLET YET.
2. Place the cleaner power supply so that it is at a minimum distance of 11.5 feet (3.5 meters) from the pool edge. The length of the standard cleaner cable is 60 feet (18.29 meters).



3. Stretch out the floating cable along the pool deck in the sun to remove any twisting the cord has from storage and measure out the approximate amount of cleaner cord needed for pool coverage.

4. Connect the floating cable to the power supply. Use only the original Power Supply Control manufactured by Hayward.



5. Place the cleaner in the pool. It will slowly sink to the bottom of the pool as the air inside is released.

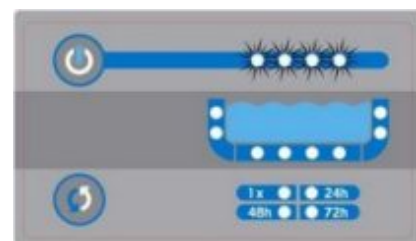
⚠ Notice: To reduce risk of injury and prevent damage to the cleaner during the start up sequence the cleaner has been equipped with an out of water sensor. Should the cleaner sense that it is not in the water it will power itself down. To reset the cycle switch off the power supply for 10 seconds and restart.



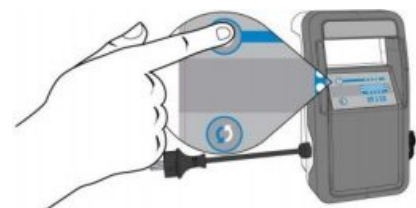
6. Plug the power supply cord into the GFCI protected electrical outlet.



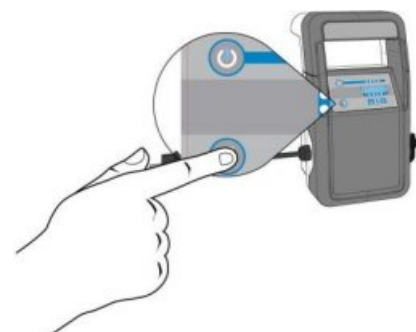
7. The power indicators should be slowly pulsing. This means that the power supply is in standby mode.



8. To turn on the power supply, press the power button. While the indicator lights are quickly pulsing select the desired cleaning schedule.



- a. Press the schedule button to select the desired schedule mode.
 - i. 1X = Single Cleaning Cycle. The cleaning cycle does not repeat
 - ii. 24h = Daily Cleaning. The robotic cleaner will turn on once every 24 hours to perform the selected cleaning cycle. There is a limit of 7 consecutive cleaning cycles in this mode.
 - iii. 48h = Every other day Cleaning. The robotic cleaner will turn on once every 48 hours to perform the selected cleaning cycle. There is a limit of 4 consecutive cleaning cycles in this mode.
 - iv. 72h = Every third day Cleaning. The robotic cleaner will turn on once every 72 hours to perform the selected cleaning cycle.



NOTE: This schedule must be reset / selected WEEKLY.
This is to prevent damage to the cleaner if left unattended.



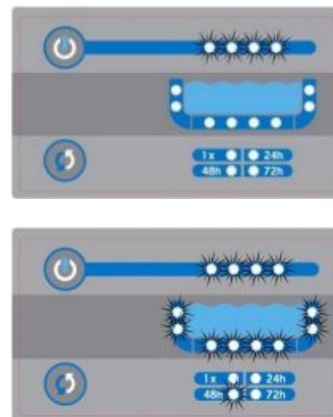
9. The robotic cleaner will automatically start the selected cleaning cycle when no buttons on the power supply have been pressed for 10 seconds. The power indicators, selected cleaning cycle mode indicators, and selected cleaning schedule indicator will light up continuously during the cleaning cycle.

Note: A cleaning cycle and schedule can be stopped by pressing the power button.

10. When the robotic cleaner has completed the cleaning cycle, the power supply will do one of the following:

a. Enter standby mode. This happens if there are no more cleaning cycles remaining in the schedule.

b. Enter schedule standby mode. This means that the power supply is in between cleanings for the indicated schedule. The power indicators, selected cleaning cycle and cleaning schedule indicators will slowly pulse. The robotic cleaner will automatically turn on and start the selected cleaning cycle per the selected schedule.



11. Unplug the power supply prior to removing the robotic cleaner from the pool.



Power Failure Feature

If the power fails during a cleaning cycle or in between scheduled cleanings, the power supply will automatically start a new cleaning cycle when power is restored.

Note: A new cleaning cycle will not be started if there was less than one whole cleaning cycle remaining in the selected schedule.

⚠ CAUTION: The power failure feature cannot distinguish a power failure from an unplugged power supply. This may cause the cleaner to initiate a cleaning cycle automatically when the power supply is plugged in.

If the supply cord is damaged it must be replaced by the manufacturer, service agent, or similarly qualified persons in order to avoid a hazard.

All electrical connections must be done by a qualified electrician according to local electrical standard (see page 23).



Out of Water Sensor

To better protect the cleaner from damage, it will sense when being asked to turn on when not safely in water, or leaves the water during operation.

Out of Water Start Up

Out of water at start up means that the cleaner has been powered on before the cleaner has been placed in the water. If the cleaner senses that it is not in the water the unit will power itself down. To reset the cycle, switch off the power supply for 10 seconds and restart.

Out of Water Operation

Out of water during operation refers to the cleaner leaving or being removed from the water while in normal operation cycle. If the cleaner senses that it is no longer in the water, the unit will attempt to re-enter the water by reversing its current direction. If the cleaner is not submerged within ninety (90) seconds of leaving the water the unit will power itself down. To reset the cycle, switch off the power supply for 10 seconds and restart.

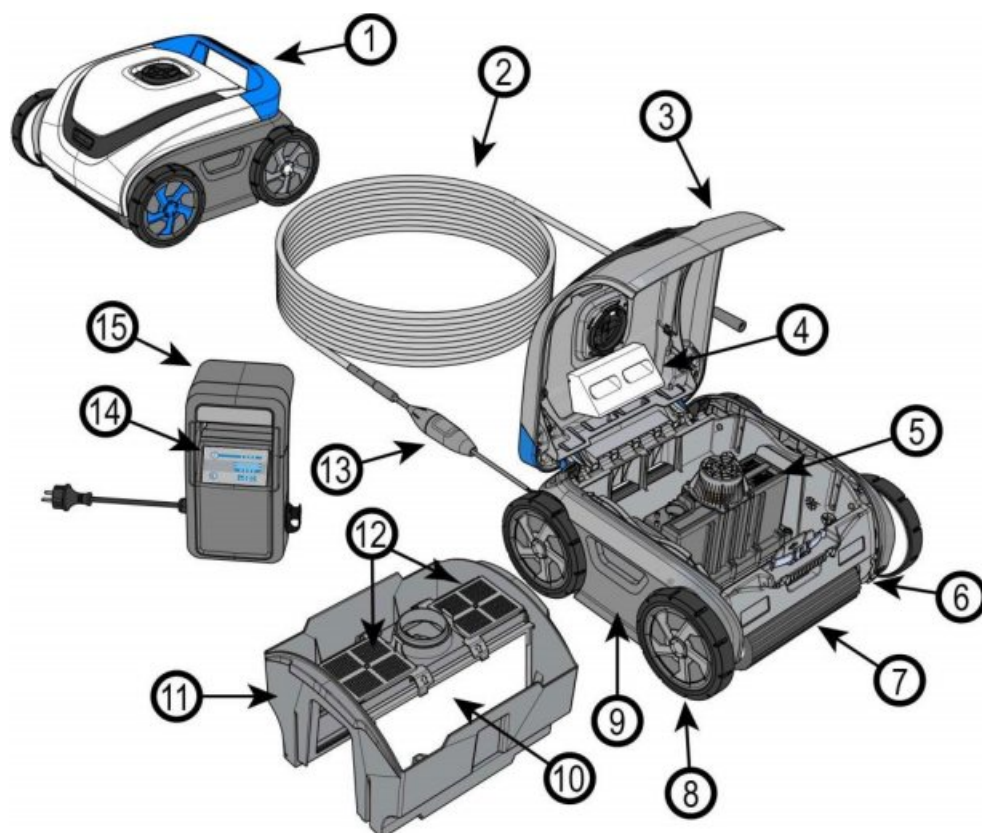
⚠ CAUTION: When removing cleaner from the pool do NOT reel it around your arm. The cleaner is heavy and may cause someone to lose their balance and fall into the pool. To avoid falling into the pool, gently reel the cable in hand-over-hand from the shallow end of the pool by gently pulling the cable until the cleaner reaches the surface. Then lift it out of the water using the handle, NOT the cable.

DO NOT ENTER THE SWIMMING POOL WHEN THE CLEANER IS OPERATING OR IN THE POOL.

Optimum operating water temperature range for the cleaner is 50°F - 100°F (10°C - 35°C).

Remove the cleaner from the pool, empty the filter bucket and clean filters after each use. Keeping the cleaner permanently in the pool may result in additional service requirements. (see maintenance section for cleaning instructions)

Keep the Power Supply Control Out of Direct Sunlight. Store the Cleaner and Power Supply in a shaded area.



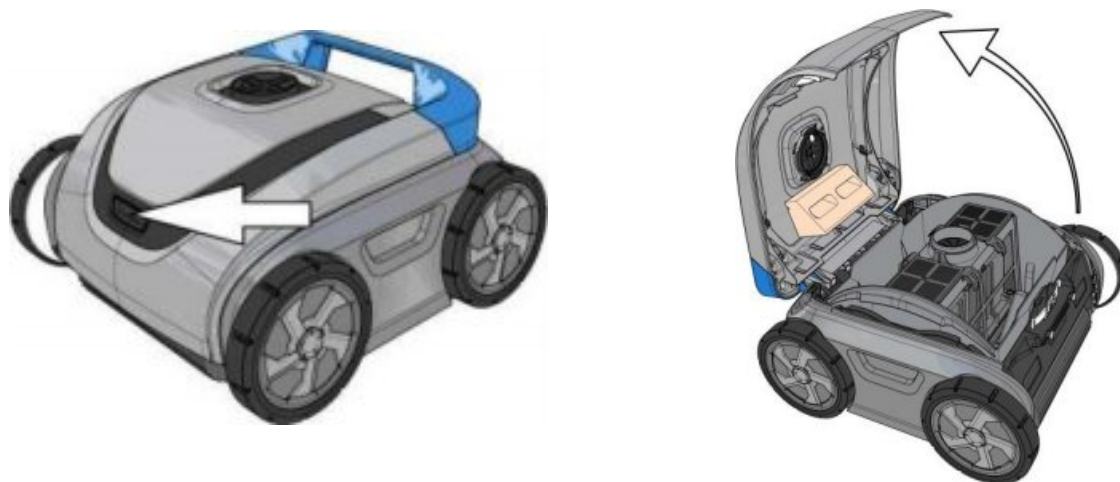
- | | |
|-------------------------|----------------------|
| 1. Handle | 8. Wheel |
| 2. Floating Cable | 9. Side Panel |
| 3. Dome Assembly | 10. Filter Cartridge |
| 4. Float | 11. Filter Bucket |
| 5. Sealed Motor Unit | 12. Filter Door |
| 6. Drive Track | 13. Cord Swivel |
| 7. Wheel Brush and Tube | 14. Power Supply |
| | 15. On/Off Switch |



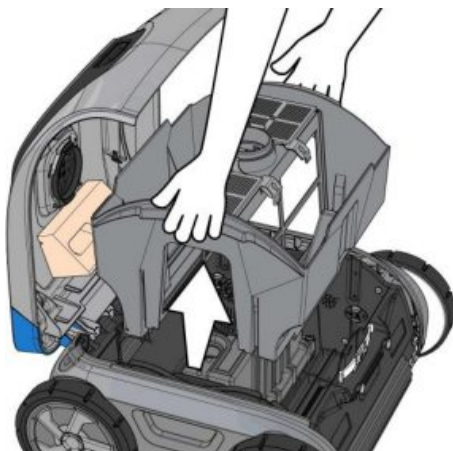
MAINTENANCE

Clean the filter cartridge after each use:

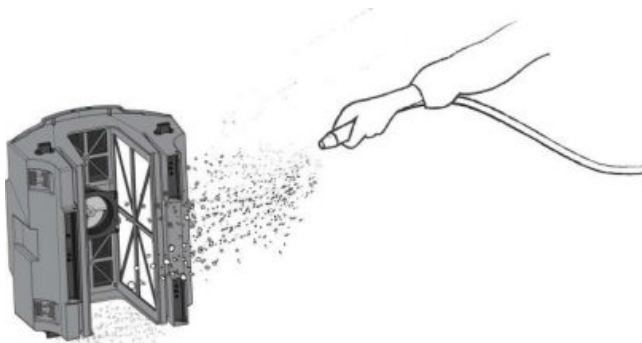
1. Open the cleaner by pressing the lid button and lifting up the dome cover.



2. Remove the easy access filter bucket assembly by lifting it up out of the cleaner with both hands from each side.



3. Flip the bucket assembly over to remove the debris and then rinse with a garden hose to remove small particles.



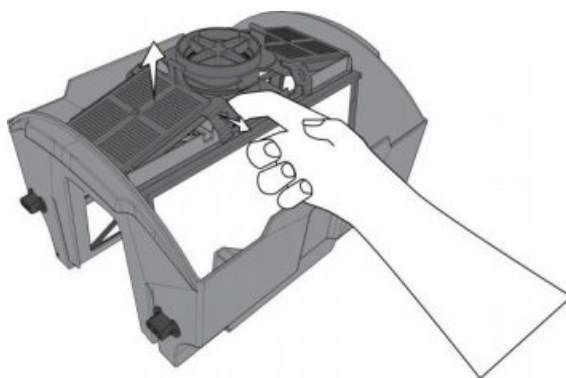
4. Filter cartridges do not need to be removed to clean.



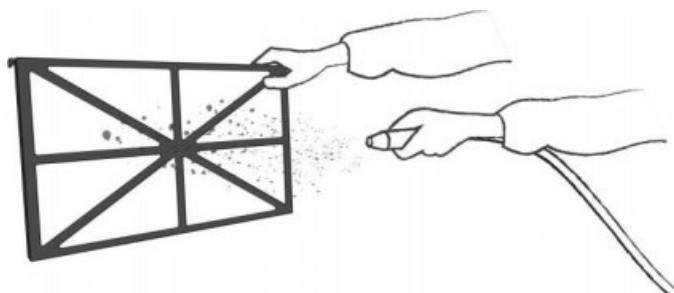
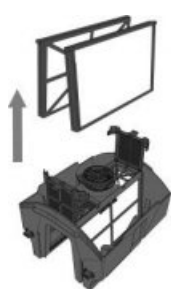
HAYWARD®

5. To clean, remove the filter cartridges:

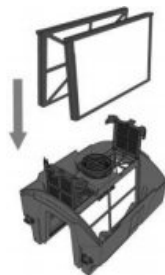
- a. Unsnap and lift up both filter door latches.



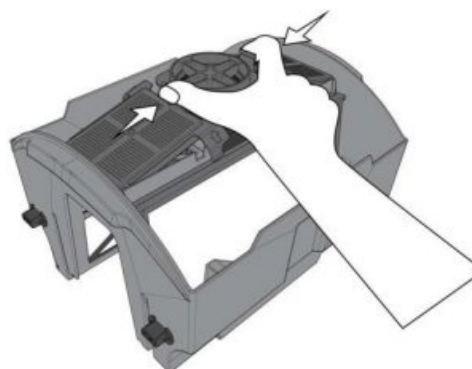
- b. Pull out the filter cartridges. Using a garden hose with a spray nozzle, wash the filter elements to remove debris. Hold the filter elements as shown to allow the debris to fall out. The cleaner your filter is the more effective the cleaner will be.



- c. If filter elements are clogged with oils you can purchase filter cartridge cleaner from your Hayward retail dealer
- d. Wash the entire filter bucket assembly.
- e. Place the filter cartridges back into the filter bucket assembly with the center frame reinforcements facing inward.



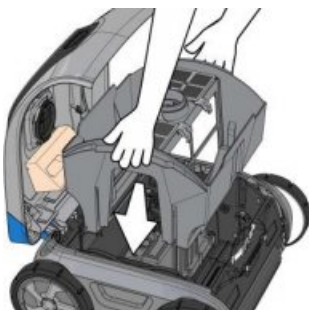
- f. Snap the filter door latches into place.





HAYWARD®

6. Return the filter bucket assembly into the cleaner using the diagram shown to determine the front and back.



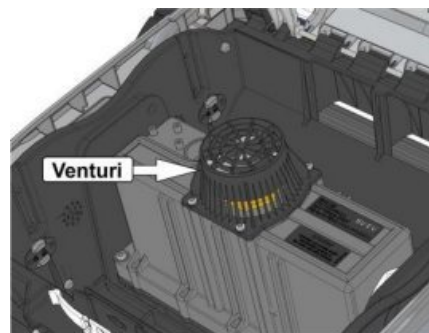
7. Close the dome and press the lid button to snap dome into place.



Periodic Cleaning of Moving Parts

⚠ WARNING: Disconnect the power supply from electrical outlet before cleaning moving parts.

- Inspect the venturi to ensure that no debris or hair has clogged the impeller.



- The impeller can be cleaned by spraying it with a garden hose.
- ▢ Spray water using a garden hose around the float to remove any sand or debris.

Remove any debris that has accumulated between the tracks and wheels.

Storage

When unit is out of the water, store the cleaner in a dry, shady location at temperatures between 40F - 115F (4°C-46°C).

Cable Care

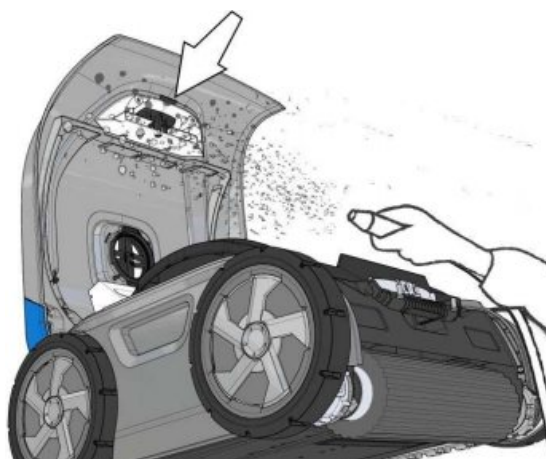
With continued use, the cable may become coiled (like a telephone cord). To correct this, stretching the cord out in the sun, the sun's heat will reduce cord twisting.

IMPORTANT: The cable should be checked periodically for any external damage.



IMPORTANT TIPS

- Do not drop or throw the cleaner into pool. Place cleaner away from the pool wall but do not throw the cleaner in the pool.
- Cleaning the filter cartridges after every use maximizes the unit's performance.
- Replace worn brushes or foam rollers.
- To avoid clogging the cleaner's filter elements, be sure all chemical powders are fully dissolved before operating the cleaner.
- In a pool with high calcium content, more frequent cleaning of the filter cartridges is recommended.
- Save the original carton for extended storage or shipping requirements should your cleaner require service by a Hayward Authorized Service Center.
- The sealed Motor Unit and the Power Supply contain no user-serviceable parts. Opening them will automatically VOID your warranty.
- Remove items such as thermometer, toys and the like from the pool before operating the unit. Such items can jam the cleaner and cause damage to the unit and/or your pool.
- The filter bucket is designed to be cleaned with the filters installed for normal clean up. For deep cleaning, the user can remove each filter cartridge and clean separately.
- During the normal operating cycle of the cleaner, the handle side of the unit will rise from the pool bottom to allow the unit to clear obstacles, such as elevated main drains and stair steps.
- For cleaners used in areas that have a lot of sand the cleaner may need to be rinsed with water at all flapper (filter debris container's flapper is at intake port) areas, and may need rinsing at the dome push button to allow free operation.





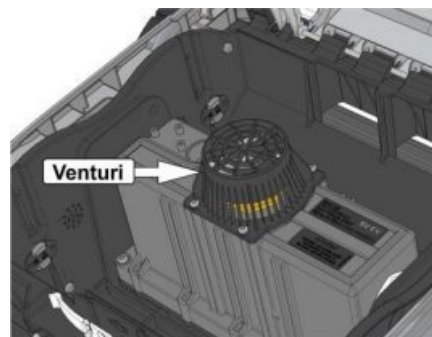
Troubleshooting - Power Supply:

Warning: Do not attempt to repair the power supply. There are no user serviceable parts.

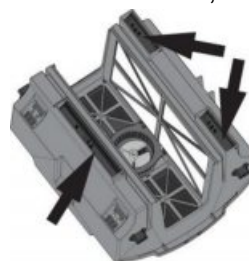
Symptom	Possible Solutions
No Power, power supply indicators do not light	<p>Make sure that the power supply is plugged into a functioning GFCI outlet. Reset GFCI if necessary. Note: Repeated GFCI trips may indicate a faulty GFCI or non-repairable failure of the power supply. In such case, discontinue use of the power supply.</p> <p>Make sure that the service circuit breaker or fuse have not tripped.</p>
Cleaner does not operate.	<p>It may take up to 1 minute from the start of a cleaning cycle for the cleaner to begin moving. Make sure that a cleaning cycle has been initiated.</p>
All power supply indicators flash, cleaner does not operate	<p>A problem was detected with the power supply. The flash pattern identifies the type of problem.</p> <p>*1 flash every 3 seconds: Overcurrent Detection: This may happen if debris becomes lodged in the impeller or drivetrain of the cleaner. A damaged cleaner cable is also a potential cause of this issue. This fault can be cleared by unplugging the power supply from the utility power for at least 1 minute.</p> <p>*2 flashes every 3 seconds: Over Temperature Detection. The failure will automatically reset and a cleaning cycle will commence when the power supply cools down. Place the power supply upright with the heatsink away from a wall or surface. Keep the power supply out of direct sunlight.</p> <p>*3 flashes every 3 seconds: Unplug the power supply from the utility power. Wait at least 1 minute to reset the fault. Make sure the cleaner cord is not plugged into the power supply. Plug the power supply power cord into the electrical outlet. Set the power supply to start a cleaning cycle. If this fault repeats, the problem is with the power supply. Otherwise, there is a problem with the cleaner or the cleaner cord.</p>

TROUBLESHOOTING - Cleaner

- If the cleaner fails to pick up fine or heavy debris:
 - It may be clogged. Clean the filter. A filter cleaning solution can be purchased from your Hayward retail dealer to remove excessive dirt and/or sand.
- If the cleaner starts working momentarily but then stops working:
 - Impeller may be clogged or jammed with debris, check and clean if necessary following the instructions in the maintenance section.

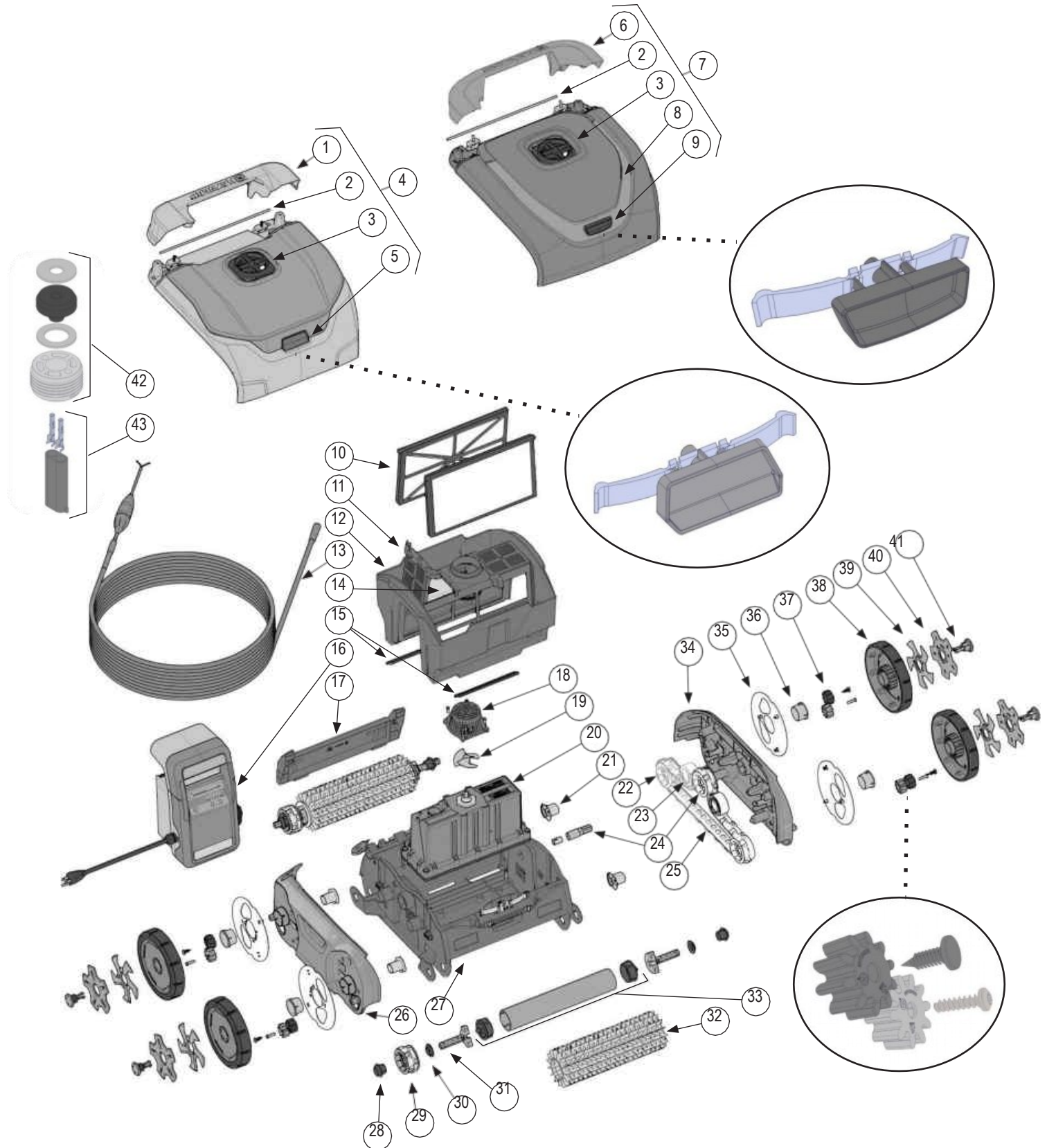


- Brush roller or drive tracks may be stuck, check for debris and clean if necessary.
 - Cleaner performs by both timing and a pool wall detection sensor, whichever comes first.
- There are 3 intake ports located at bottom of filter bucket and near the brush roller, check for debris and clean if necessary.



- Cleaner may get stuck if a high main drain is installed in the pool. Cleaner may remain lodged on the drain for a short period of time, but will eventually free itself by virtue of the cleaner's embedded program.
- Cleaner performance: Confusion may exist over the perception of how the cleaner operates at different times during each cycle. It is important to judge the performance of the cleaner by observing improved pool cleanliness after the cleaner has run a complete cleaning cycle.
- If a cleaner has poor coverage of the pool in one cycle or only covers a small area, check the filter and clean if necessary and make sure the unit is not getting caught on drains, in-floor cleaning heads or toys. The user may try starting the cleaner in different locations to find the optimum cleaning location.
- If debris falls from cleaner while removing from pool, it may be caused by filter overload, increase frequency of filter cleaning. Assure that there is no large debris blocking any of the three intakes. Large debris must be removed from the pool before using machine. If drain flaps are out of place or stuck by sand or leaves in the open position, the flaps can be snapped back into place, after cleaning the area.
- If the flotation cord gets twisted which can be caused by the cleaner getting stuck on large objects such as rocks, toys or main drains, it can be straightened by laying the flotation cord at full length (if possible) in the sun; heat from the sun will help reduce the cord twisting.
- If a high level of debris is visible through the dome windows (if so equipped), remove cleaner quickly from the water to reduce the chance of the debris escaping the filter bucket and reentering the pool.

Weight (w/o cable)	26.75 lb (12.13 Kg)			
Cable Length,	60 ft (18.29 m)			
Materials	High Impact ABS - Metal Parts of Non-Ferrous Stainless Steel			
Operating Water Temperature Range	50° - 100° F			
	10° - 35° C			
Waterproof Sealing	Triple Redundant Radial Shaft Seals & O-ring			
Motor Housing	Sealed, Watertight, High Impact Polypropylene			
Overload Protection	Electronic Overload Monitoring with auto-shutoff			
Filter				
Type	Removable, Re-Usable, Pleated Element Cartridge			
Media	Pleated Cellulose/Polyester Blend			
Cleaning Routine Control				
Type	Adaptive Seek Control Logic (ASCL®) Microprocessor			
Cleaning Cycle	Full Cycle			
	3 hours			
Drive System	Direct Drive w/Polyurethane Drive Track & Acetal/Stainless Steel Bearing System			
Power Supply				
Input Primary Voltage	120 VAC +/- 10% 60Hz			
Output Secondary Voltage	30 VDC			
Rated Output Current	3.5 A			
Weight	9.75 lbs (4.42 Kg)			
Shipping	Length	Width	Height	
Carton Dimensions (mm) w/Caddy	24 in (620 mm)	17 in (440 mm)	30 in (752 mm)	
Carton Dimensions x-Caddy	21 in (492 mm)	21 in (492 mm)	26 in (657 mm)	
Shipping Weight with Caddy	52 lb (23.6 Kg)			
Shipping Weight x-Caddy	40 ib. (18.4 Kg)			



Part Number	Description
1A RCX341203OR	Handle Assembly - Orange
1B RCX341203GR4	Handle Assembly - Gray 4
2 RCX97429	Hood Hinge Axle
3A RCX341126GR2	Hood Exhaust Nozzle - Gray 2
3B RCX341126GR3	Hood Exhaust Nozzle - Gray 3
3C RCX341126GR4	Hood Exhaust Nozzle - Gray 4
3D RCX341126BK	Hood Exhaust Nozzle - Black
4A RCX341201GR2	Hood Assembly - Gray 2
4B RCX341201WH	Hood Assembly - White
5A RCX341205GR4	Button Assembly - Gray 4
5B RCX341205TR	Button Assembly - Turquoise
6A RCX341107WH	Handle Assembly - White
6B RCX341107BL	Handle Assembly - Blue
6C RCX341107GR3	Handle Assembly - Cool Gray 3
6D RCX341107OR	Handle Assembly - Orange
7A RCX341105WHRD	Hood Assembly - White/Red
7B RCX341105WHGR2	Hood Assembly - White/Gray2
7C RCX341105WHGR3	Hood Assembly - White/Gray3
7D RCX341105GR1	Hood Assembly - Gray1
7E RCX341105GR2	Hood Assembly - Gray2
7F RCX341105WHBK	Hood Assembly - White/Black
8A RCX341106RD	Hood Trim - Red
8B RCX341106GR2	Hood Trim - Gray 2
8C RCX341106GR3	Hood Trim - Gray 3
8D RCX341106BK	Hood Trim - Black
8E RCX341106GR4	Hood Trim - Gray 4
9A RCX341108RD	Button Assembly - Red
9B RCX341108GRN	Button Assembly - Green
9C RCX341108BL	Button Assembly - Blue
9D RCX341108GR3	Button Assembly - Gray 3
9E RCX341108GR4	Button Assembly - Gray 4
9F RCX341108TR	Button Assembly - Turquoise
10A RCX70101PAK2	Filter Cartridges (set of 2)
10B RCX70103PAK2	Spring Cleanup Cartridges (set of 2)

Part Number	Description
11 RCX97417	Filter Door
12 RCX97415	Filter Housing Bucket
13 RCX341190	60' Cord Assembly With Swivel
14 RCX97417SPAK2	Door Filter Element (set of 2)
15 RCX974057KIT	Drain Flap Kit
16 RCX341161	Power Supply 120VAC
17A RCX341103GR2	Rear Panel - Gray 2
17B RCX341103GRN	Rear Panel - Green
17C RCX341103BK	Rear Panel - Black
17D RCX341103GR3	Rear Panel - Gray 3
17E RCX341103GR4	Rear Panel - Gray 4
17F RCX341103TR	Rear Panel - Turquoise
18 RCX97455	Impeller Cover Kit
19 RCX11000	Impeller
20 RCX341195	Motor Assembly
21 RCX341111PAK2	Wheel Hub Kit (set of 2)
22 RCX97505PAK2	Drive Track Wheel Kit (set of 2)
23 RCX26000PAK2	Pulley Bearing Kit (set of 2)
24 RCX97502KIT	Drive Shaft & Bearing Kit
25 RCX97501GR	Drive Track Belt
26A RCX341101GR2	Left Side Cover - Gray 2
26B RCX341101GRN	Left Side Cover - Green
26C RCX341101BK	Left Side Cover - Black
26D RCX341101GR3	Left Side Cover - Gray 3
26E RCX341101GR4	Left Side Cover - Gray 4
26F RCX341101TR	Left Side Cover - Turquoise
27 RCX341142	Cleaner Base
28 RCX97506PAK2	Roller Bushing Kit (set of 2)
29 RCX97509PAK2	Drive Wheel Kit (set of 2)
30 RCX97435PAK2	Roller Shaft Bushing Kit (set of 2)
31 RCX97507PAK2	Roller Wheel Shaft (set of 2)
32A RCX26008	Roller Brush
32B RCX26011WCE	Foam Roller Assembly
33 RCX97510	Wheel Tube With Caps

Part Number	Description
34A RCX341102GR2	Right Side Cover - Gray 2
34B RCX341102GRN	Right Side Cover - Green
34C RCX341102BK	Right Side Cover - Black
34D RCX341102GR3	Right Side Cover - Gray 3
34E RCX341102GR4	Right Side Cover - Gray 4
34F RCX341102TR	Right Side Cover - Turquoise
35A RCX341127GR2	Wheel Shield - Gray 2
35B RCX341127GRN	Wheel Shield - Green
35C RCX341127BK	Wheel Shield - Black
35D RCX341127GR3	Wheel Shield - Gray 3
35E RCX341127GR4	Wheel Shield - Gray 4
35F RCX341127TR	Wheel Shield - Turquoise
36 RCX341109PAK2	Wheel Bushing Kit (set of 2)
37 RCX341145KIT	Wheel Drive Gear Kit
38A RCX341110WHGR3	Wheel Rim & Tire - White/Gray3
38B RCX341110BKBL	Wheel Rim & Tire - Black/Blue
38C RCX341110WHBK	Wheel Rim & Tire - White/Black
38D RCX341110GR4BK	Wheel Rim & Tire - Gray 4/Black
39A RCX341123RD	Boots Wheel Style - Red
39B RCX341123OR	Boots Wheel Style - Orange
39C RCX341123GR1	Boots Wheel Style - Gray 1
39D RCX341123GR3	Boots Wheel Style - Gray 3
39E RCX341123GR4	Boots Wheel Style - Gray 4
40A RCX341206GR4	Starfish Wheel Style - Gray 4
40B RCX341206OR	Starfish Wheel Style - Orange
41A RCX341112RD	Wheel Axle Plug - Red
41B RCX341112WH	Wheel Axle Plug - White
41C RCX341112GR1	Wheel Axle Plug - Gray 1
41D RCX341112GR3	Wheel Axle Plug - Gray 3
41E RCX341112OR	Wheel Axle Plug - Orange
41F RCX341112GR4	Wheel Axle Plug - Gray 4
42 RCX59004KIT	Motor Cord Seal Kit
43 RCX59002KIT	Motor Cord Connector Kit



Gray Color Options

HAYWARD only warranties the quality, performance and safety of its products when assembled with genuine Hayward manufactured parts. Use of non-genuine Hayward manufactured parts will void all warranty.

Hayward® Pool Products Limited Warranty

To original purchasers of this equipment, Hayward Pool Products, Inc. warrants its cleaners to be free from defects in materials and workmanship for a period of ONE (1) year from the date of purchase, when used in single family residential applications. Wear parts are not covered by the warranty.

The limited warranty excludes damage from freezing, negligence, improper installation, improper use or care or any Acts of God. Parts that fail or become defective during the warranty period shall be repaired or replaced, at our option, within 90 days of the receipt of defective product, barring unforeseen delays, without charge.

Proof of purchase is required for warranty service. In the event proof of purchase is not available, the manufacturing date of the product will be the sole determination of the purchase date.

To obtain warranty service, please contact the place of purchase or the nearest Hayward Authorized Service Center. For assistance on contact your nearest Hayward Authorized Service Center www.hayward.com/locator/?hasc

The Hayward Pool products warranty does not apply to components manufactured by others. For such products, the warranty established by the respective manufacturer will apply.

Hayward shall not be responsible for cartage, removal, repair or installation labor or any other such costs incurred in obtaining warranty replacements or repair.

The express limited warranty above constitutes the entire warranty of Hayward Pool Products with respect to its' pool products and is in lieu of all other warranties expressed or implied, including warranties of merchantability or fitness for a particular purpose. In no event shall Hayward Pool products be responsible for any consequential, special or incidental damages of any nature.

Some states do not allow a limitation on how long an implied warranty lasts, or the exclusion of incidental or consequential damages, so the above limitation may not apply to you. This warranty gives you specific legal rights, and you may also have other rights, which vary from state to state.

Hayward Pool Products
620 Division Street
Elizabeth, NJ 07207

* Supersedes all previous publications.

EXCEPTIONS AND EXCLUSIONS FROM WARRANTY

The cleaner must be used with electrical requirements as indicated on the Power Supply. Otherwise damage, defects, malfunctions or other failures of the cleaner arising from use on electrical supply not as indicated are excepted and excluded from this warranty.

Defects, malfunctions, failure or damage of the cleaner caused by improper, unreasonable, or negligent use or abuse by the consumer, are excluded from this warranty.

If any repair is made on your cleaner by anyone other than authorized personnel (designated to perform such work) without first having obtained factory instructions, HAYWARD, at its sole option, may determine that this warranty will not apply and that reimbursement for such repair will not be made because of failure to comply with such factory specified instructions.

Filter cartridges are not covered by this warranty and will be replaced only with your prior approval of the charges.

ELECTRIC STANDARD/COUNTRY

F	NF EN C 15-100	GB	BS7671:1992
D	DIN VDE 0100-702	EW	EVHS-HD 384-7-702
A	ÖVE 8001-4-702	H	MSZ 2364-702:1994 / MSZ 10-533 1/1990
E	UNE 20460-7-702 1993, REBT ITC-BT-31 2002	M	MSA HD 384-7-702.S2
IRL	Wiring Rules + IS HD 384-7-702	PL	PN-IEC 60364-7-702:1999
I	CEI 64-8/7	CZ	CSN 33 2000 7-702
LUX	384-7.702 S2	SK	STN 33 2000-7-702
NL	NEN 1010-7-702	SLO	SIST HD 384-7-702.S2
P	RSIUEE	TR	TS IEC 60364-7-702

HAYWARD only warrants the quality, performance and safety of its products when assembled with genuine

Hayward manufactured parts. Use of non-genuine Hayward manufactured parts will void all warranty.



HAYWARD®

PRODUCT REGISTRATION (Retain for you records)

DATE OF INSTALLTION: _____/_____/_____

Δ Retain this Warranty Certificate (upper portion) in a safe and convenient location for your records.



DETACH HERE: Fill out bottom portion completely and mail within 10 days of purchase/installation or register online.

AUTOMATIC SURFACE SKIMMER

Warranty Card Registration

Register online at www.hayward.com

Please Print Clearly:

First Name _____ Last Name _____

Street Address _____

City _____ State _____ Zip _____

Phone Number _____ Purchase Date _____

E-Mail Address _____

Serial Number

--	--	--	--	--	--	--	--	--	--	--	--	--	--	--	--	--	--	--	--

Model Number _____

Pool Capacity _____ (U.S. Gallons)

☐ Please include me on all e-mail communications regarding Hayward® Equipment or promotion

Mail to: Hayward Pool Products, 620 Division Street, Elizabeth, NJ 07207

Attn: Warranty Dept

Or REGISTER YOUR WARRANTY ON-LINE AT WWW.HAYWARD.COM

Years Pool has been in service
☐ < 1 year ☐ 1-3 ☐ 4-5 ☐ 6-10 ☐ 11-15 ☐ Purchased

from _____

☐ Builder ☐ Retailer ☐ Pool Service ☐ Internet/Catalog

Company Name _____

Address _____

City _____ State _____ Zip _____

Phone _____

Type of Pool:

☐ Concrete/Gunite ☐ Vinyl ☐ Fiberglass

☐ Other _____

☐ In Ground ☐ Above Ground ☐ Spa

Installation for:



Hayward is a registered trademark of Hayward Industries, Inc. ©
2011 Hayward Industries, Inc.

HAYWARD only warranties the quality, performance and safety of its products when assembled with genuine

23

Hayward manufactured parts. Use of non-genuine Hayward manufactured parts will void all warranty.